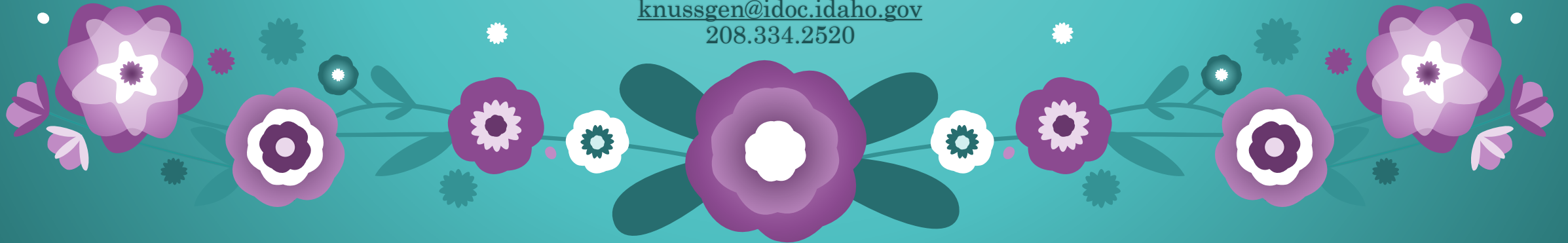


Idaho Commission of Pardons & Parole

April 2019

Kari Nussgen
Research Analyst
Idaho Commission of Pardons & Parole
knussgen@idoc.idaho.gov
208.334.2520

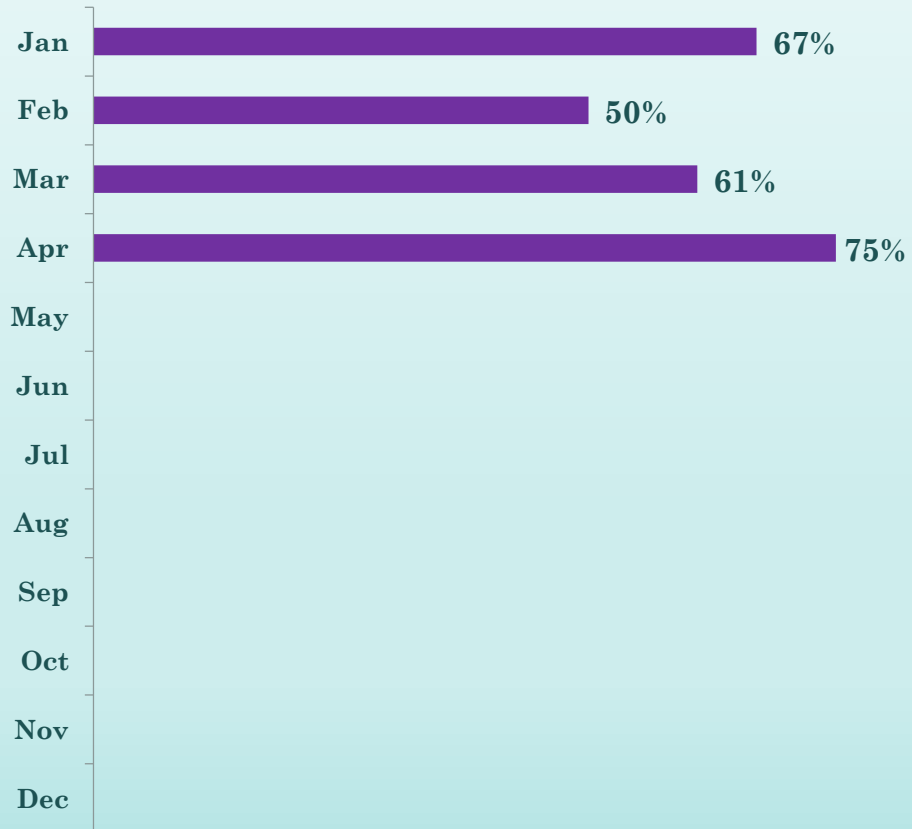


Over All Grant Rate 2019

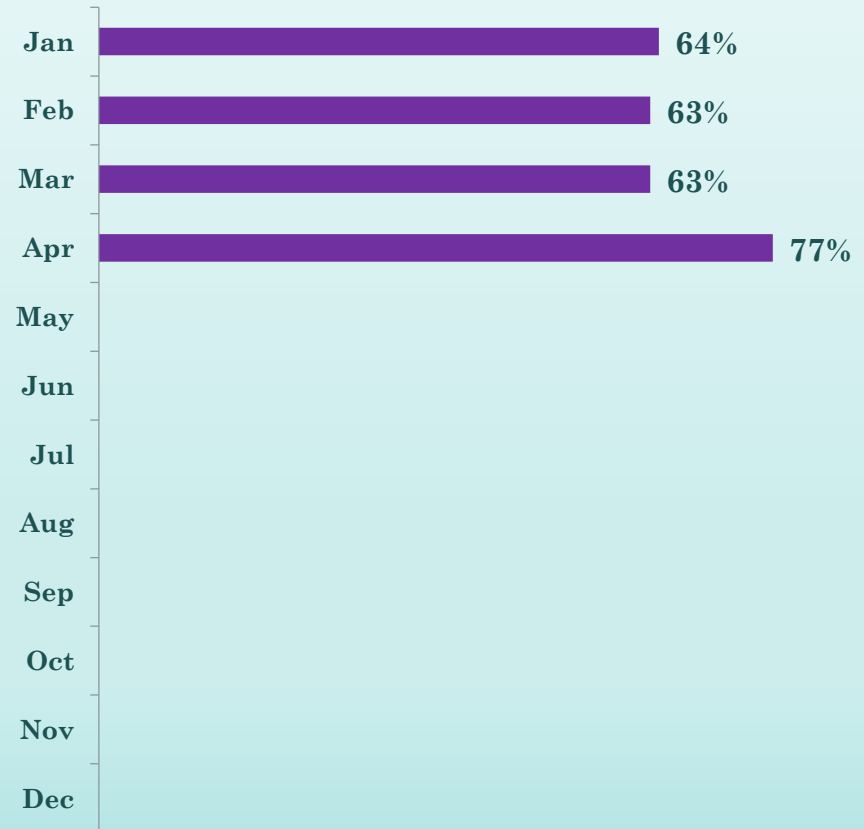


Grant Rates by Crime Type

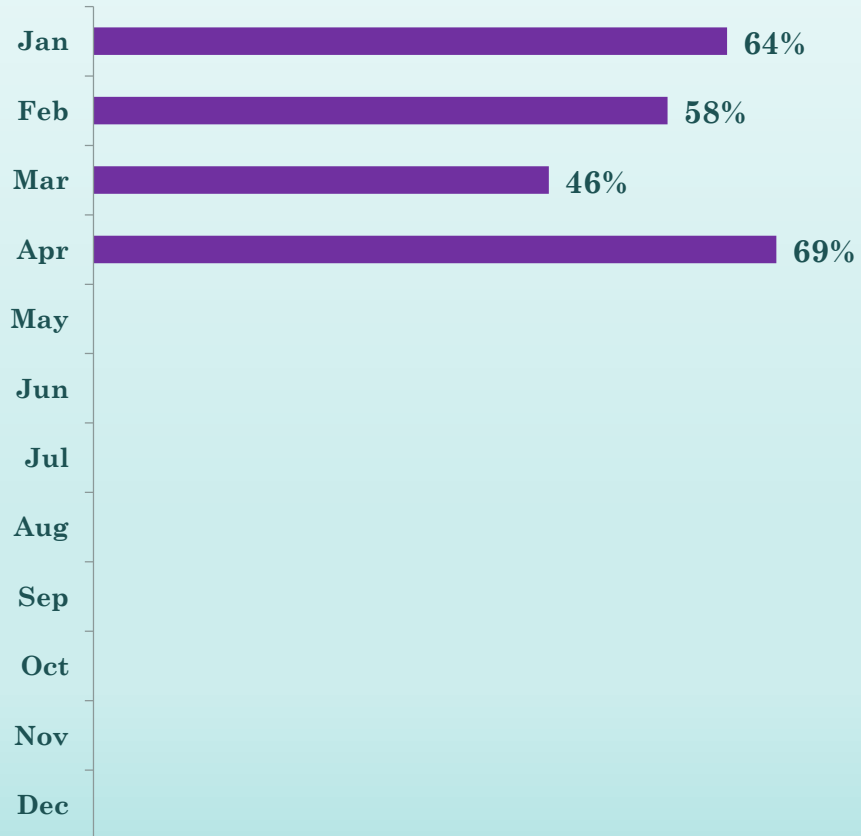
Grant Rate by Crime Type: Alcohol



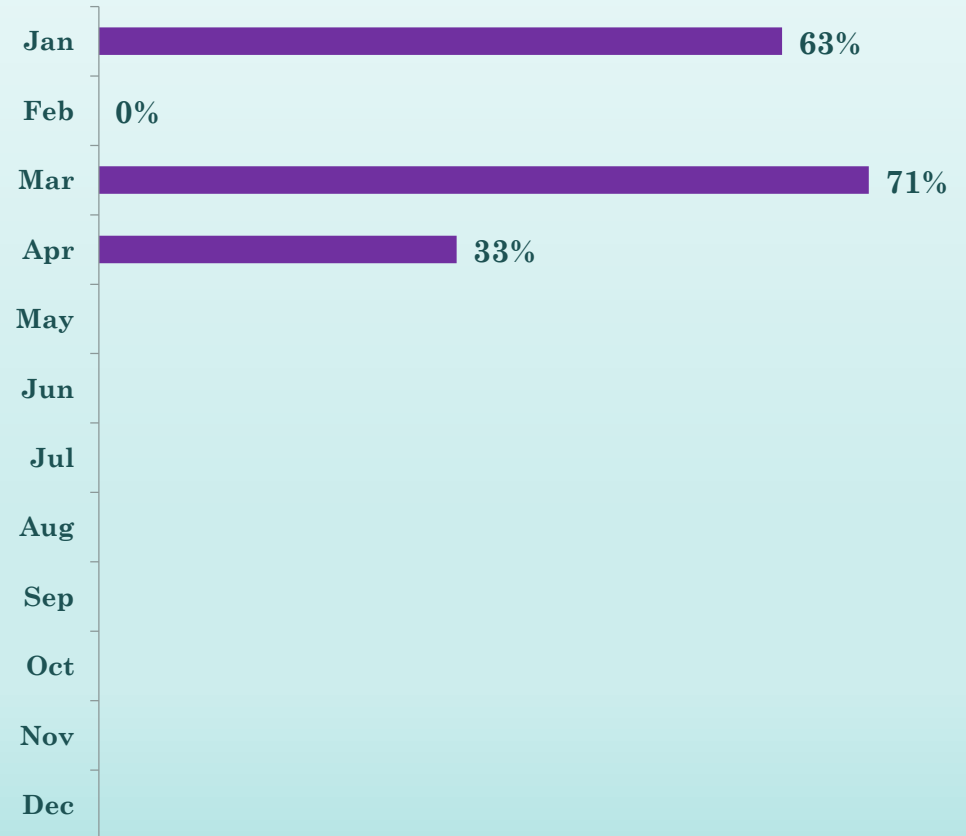
Grant Rate by Crime Type: Drug



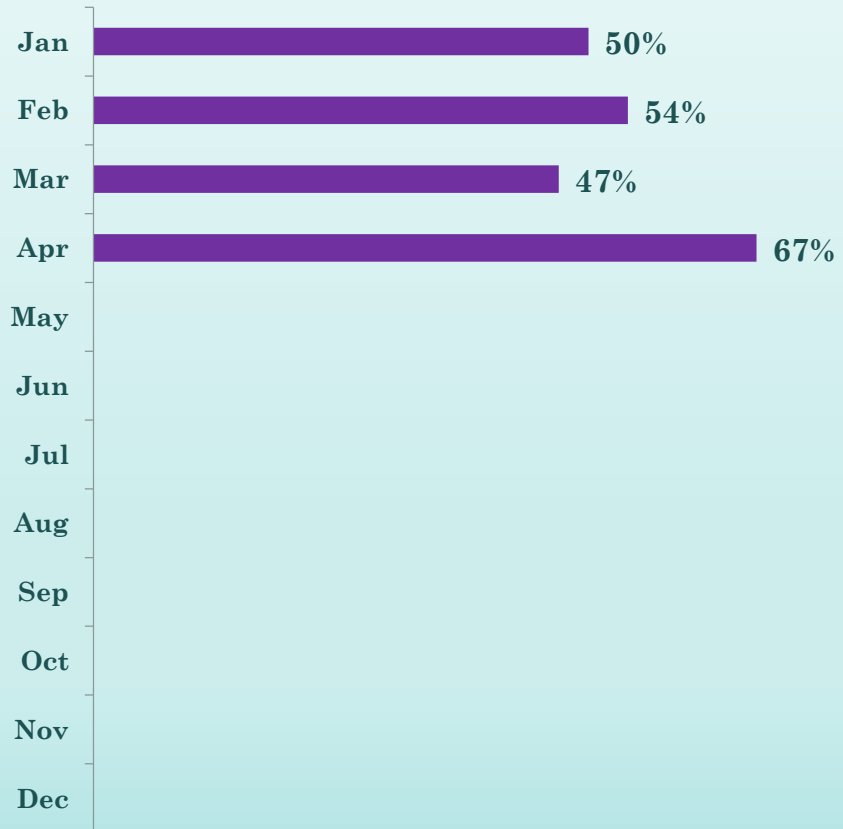
Grant Rate by Crime Type: Property



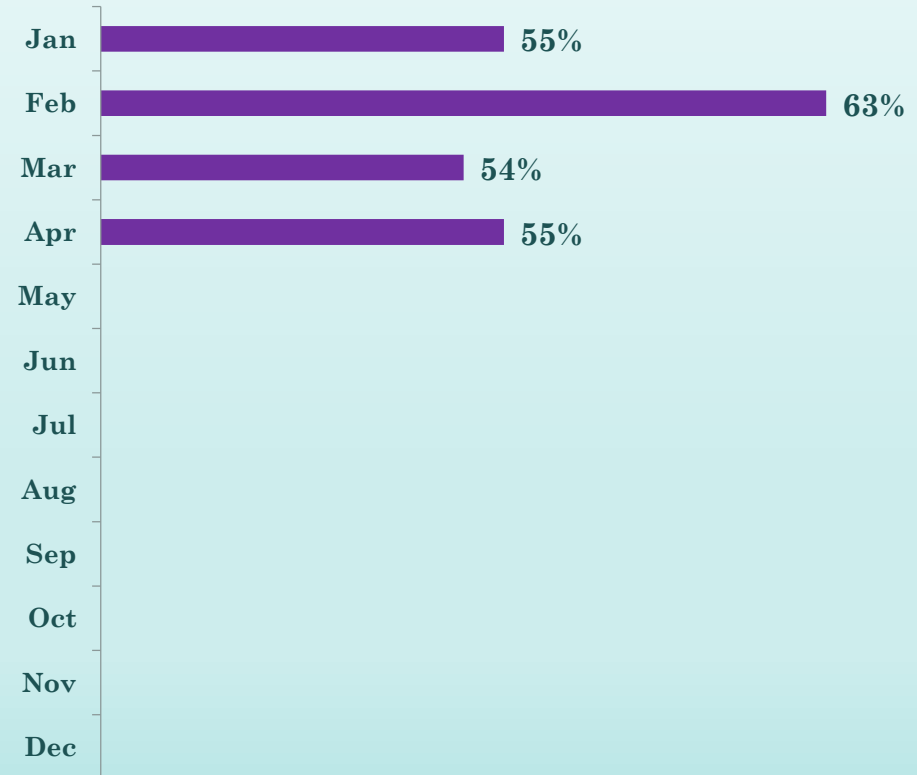
Grant Rate by Crime Type: Other



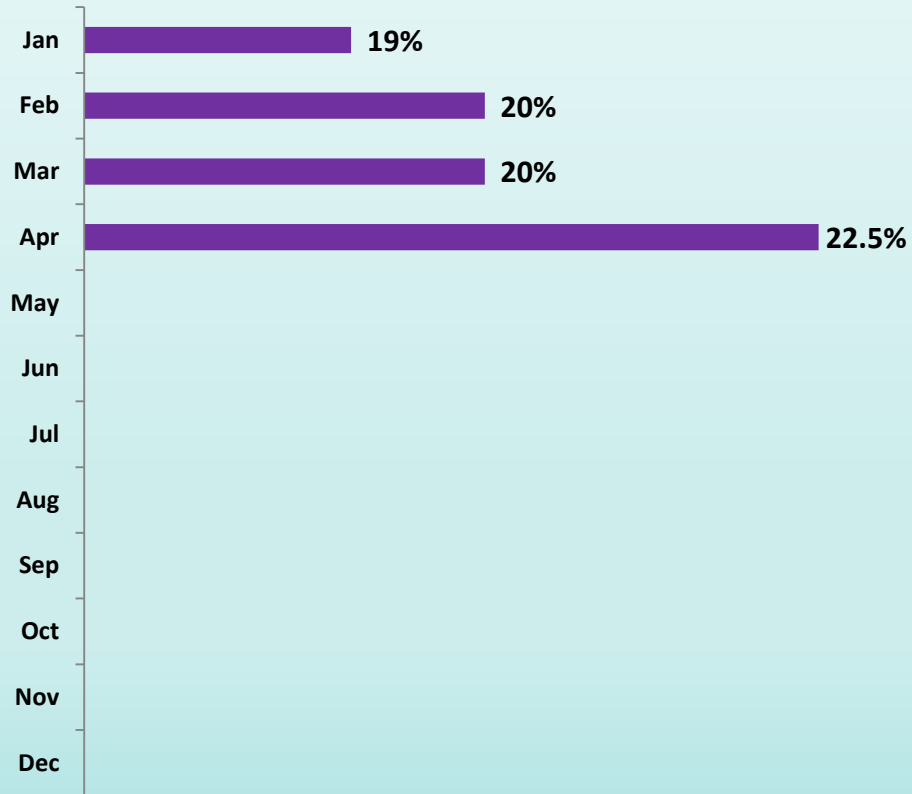
Grant Rate by Crime Type: Sex



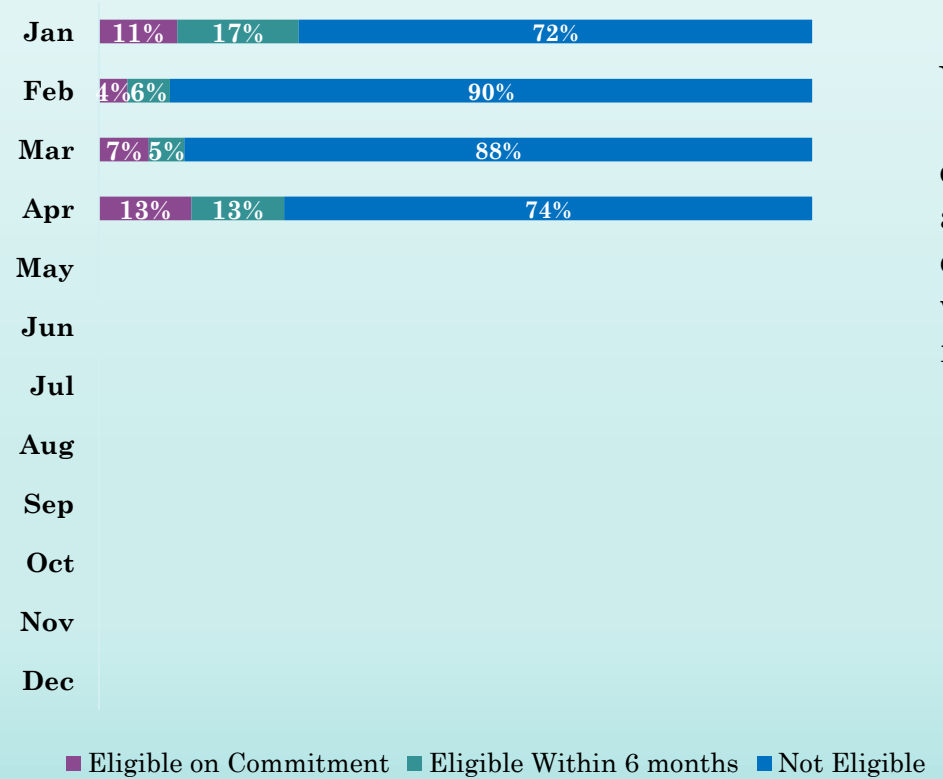
Grant Rate by Crime Type: Violence



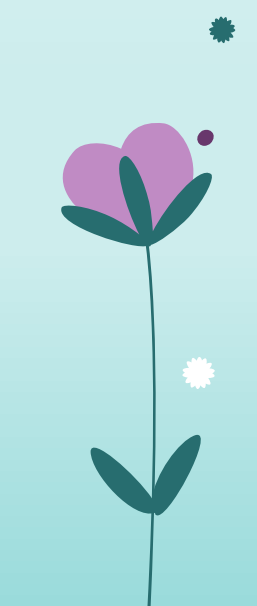
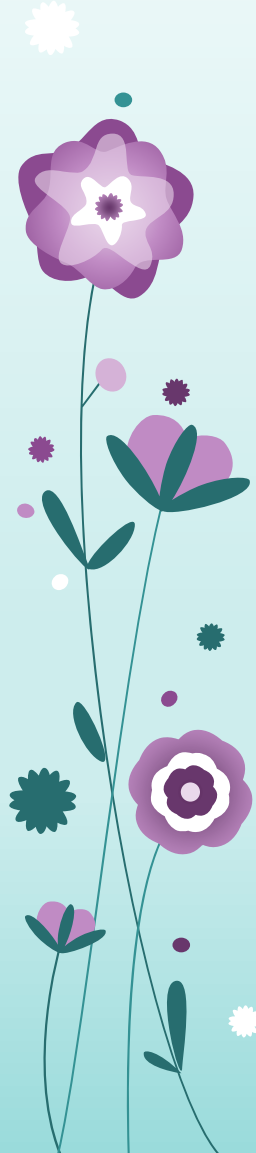
Drug & Property Offenders Identified as Parole Violators on Current Commitment



Drug & Property Offenders Parole Eligible on Commitment



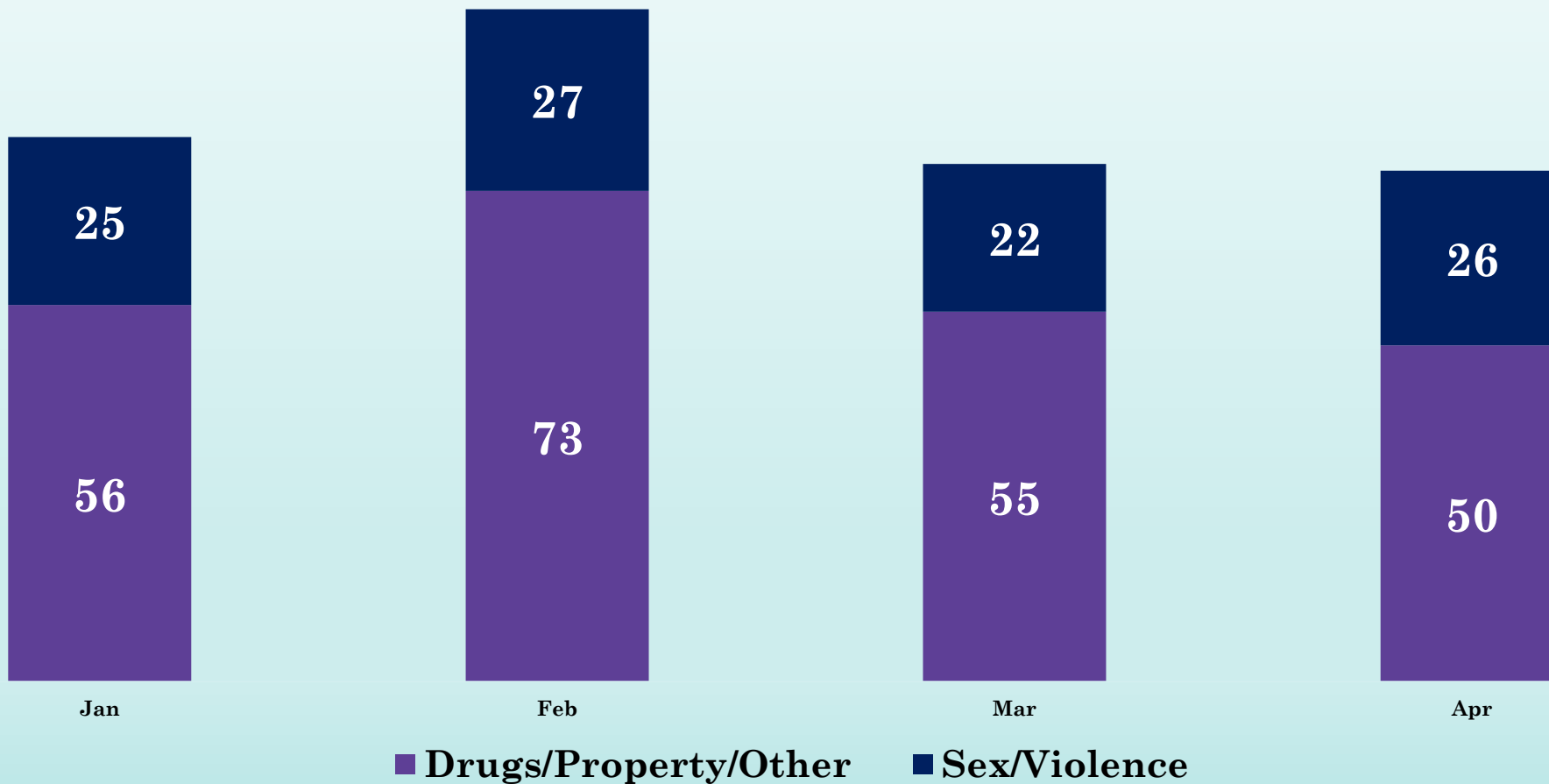
YTD Average
10% of
offenders
arrive parole
eligible or
within 6
months



Parole Violations by Type

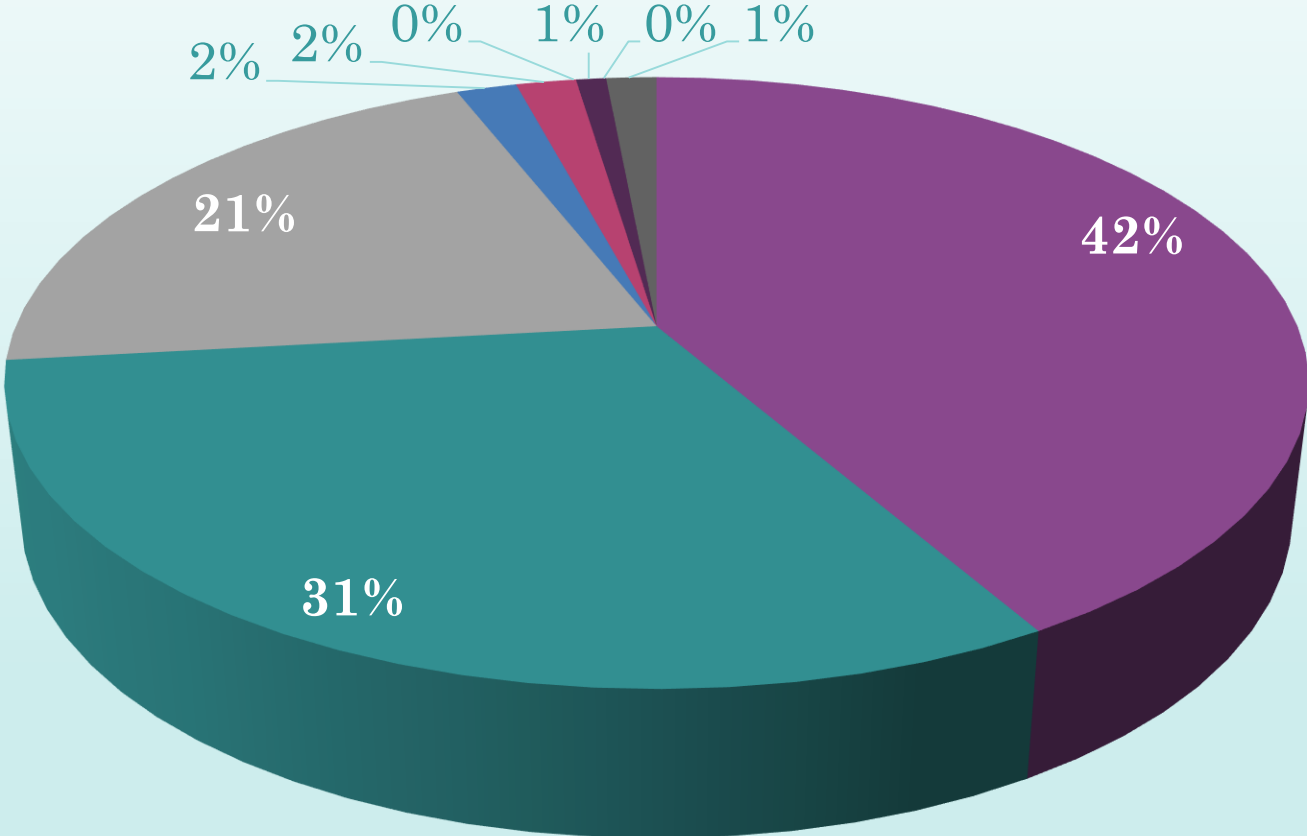


Revocation Hearings by Original Conviction Offense Type



YTD Average 70% of revocations are drug and property offenders.

Violations: Diversion



- Prison Treatment
- Jail
- Forward for Revocation
- CRC
- Drug Court
- Veterans Court
- Mental Health Court
- Wood Court
- Other

Parole Contract Releases by Month

Jan

224

Feb

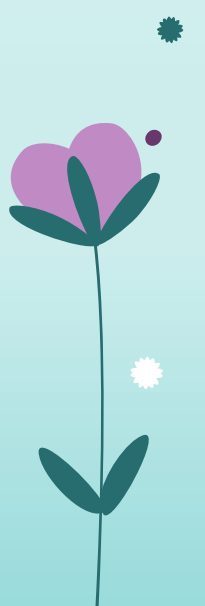
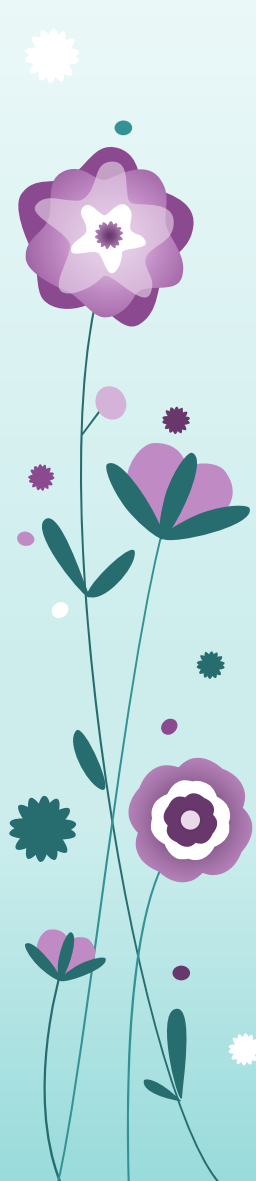
163

Mar

144

Apr

138



Victim Services 2019

YTD 1948 Interactions with Victims

